

Engineering Change Notice

Part No. <u>3579</u>	ECN No. <u>20-037</u>
Part Name <u>SM PIN</u>	Date <u>4.13.20</u>
Rev. <u>—</u>	ECR No. <u>—</u>

Description of Change: Drawing Attached

TO PREVENT NESTING OF THE PARTS, GAP HAS BEEN WAS REDUCED

Solution: Tooling Change Required

REVISE C+M

Disposition of Parts:

U.A.I.

Signed RH Date 4.13.20

Required Distribution:

Engineering Quality Control Purchasing Manufacturing/Supplier

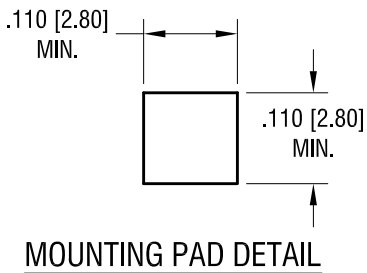
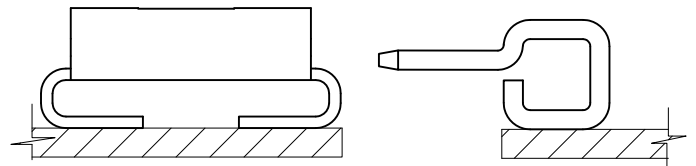
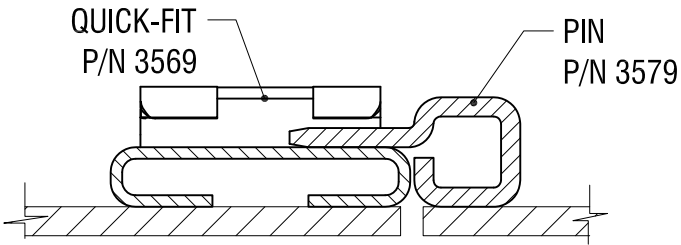
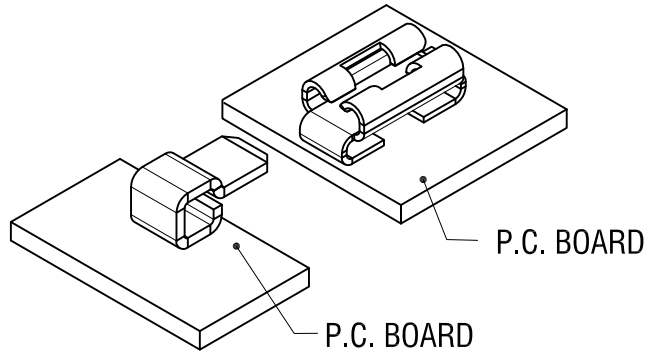
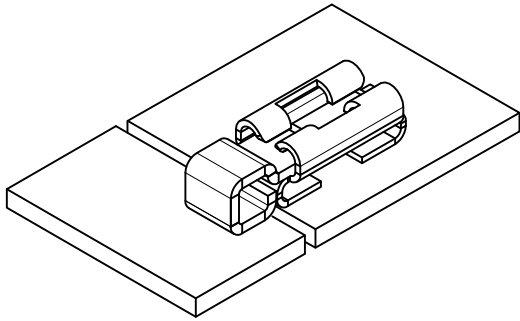
Chief Engineer: _____ Remarks: _____

Signed LN Date 4.13.20

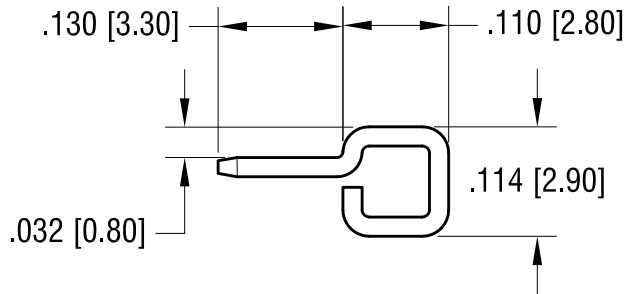
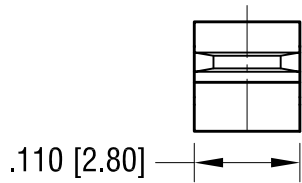
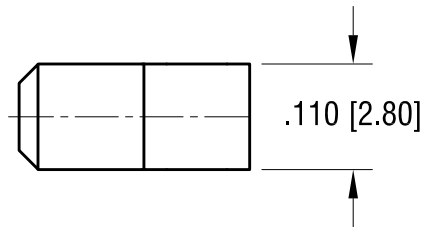
Document Control: _____ Rev. A

Change Incorporated Signed NATASHA T. Date 4.13.20

THIS DOCUMENT IS THE PROPERTY OF KEYSTONE ELECTRONICS CORP. AND SHALL NOT BE REPRODUCED, DISTRIBUTED OR USED AS A BASIS FOR MANUFACTURE WITHOUT PRIOR WRITTEN PERMISSION FROM KEYSTONE ELECTRONICS CORP.



ACTUAL SIZE



4.13.20	CHANGE AS PER ECN 20-037	A
DATE	DESCRIPTION	REV.

KEYSTONE ELECTRONICS CORP.			
www.keyelco.com • NEW HYDE PARK, NY 11040 • Tel (516) 328-7500			
PART NAME		PARALLEL FITTING SM PIN	
MATERIAL		.020 [0.50] TH'K BRASS	
FINISH		DRN BY	DATE
MATTE TIN PLATE		NT	3.12.19
		APP'D	SCALE
		RH	5X
TOLERANCES	INCH	[MM]	CODE
DECIMAL	± .005	[± 0.13]	C
ANGULAR	± 1°		DWG NO.
UNLESS OTHERWISE SPECIFIED			3579